



in partnership with



OXFORDSHIRE RELATIONAL SCHOOLS PROGRAMME

A move away from 'train and hope' to supporting sustainable culture change in our schools.



THE 4 R'S



ADAPTED FROM BRUCE PERRY AND LOUISE BOMBER

SEMH, TRAUMA INFORMED APPROACHES AND RESTORATIVE PRACTICE



WHAT?

Prevalence
of unmet
SEMH needs

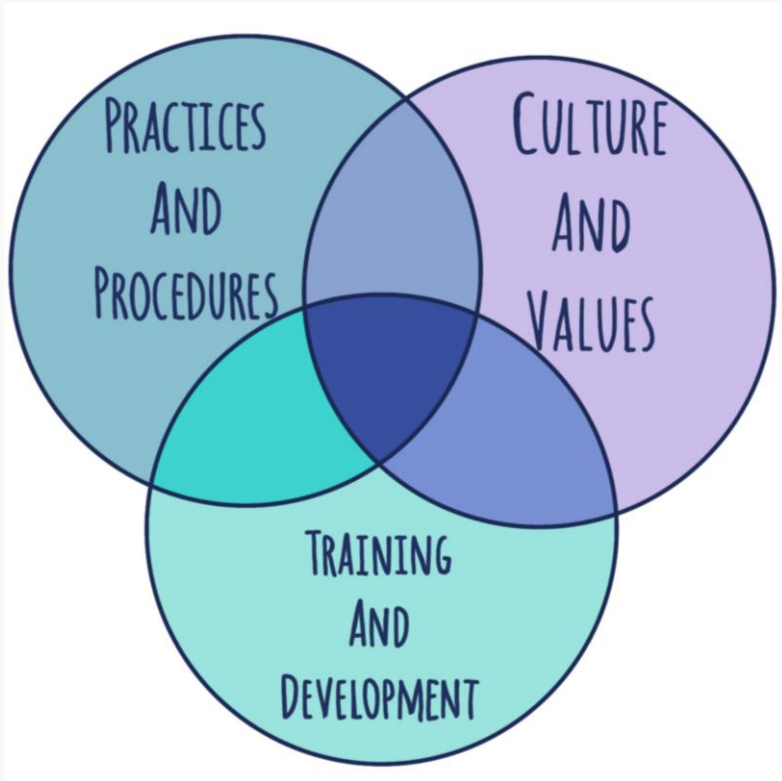
SO WHAT?

Trauma
Informed

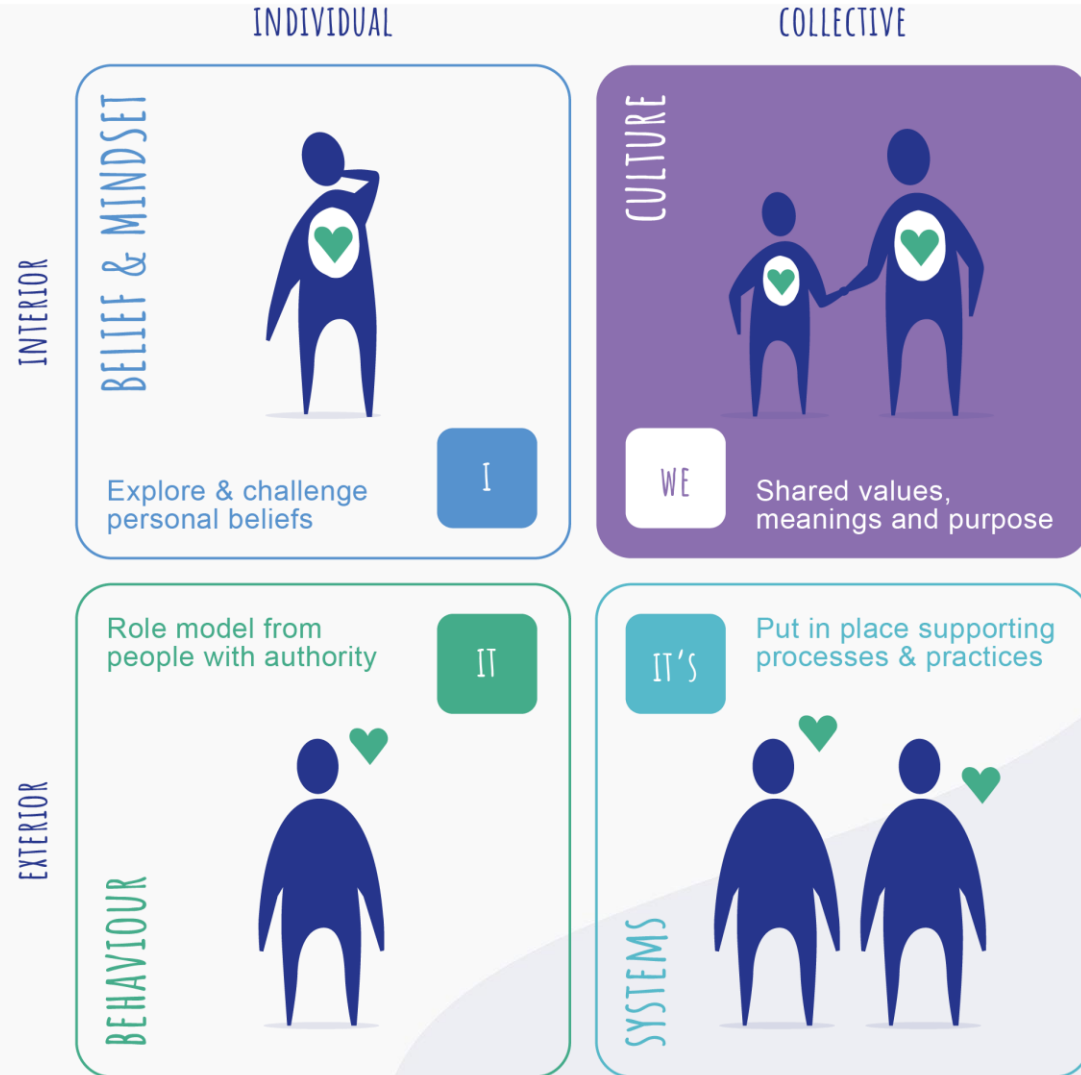
NOW WHAT?

Restorative
Practices

AN INCLUSIVE CULTURE



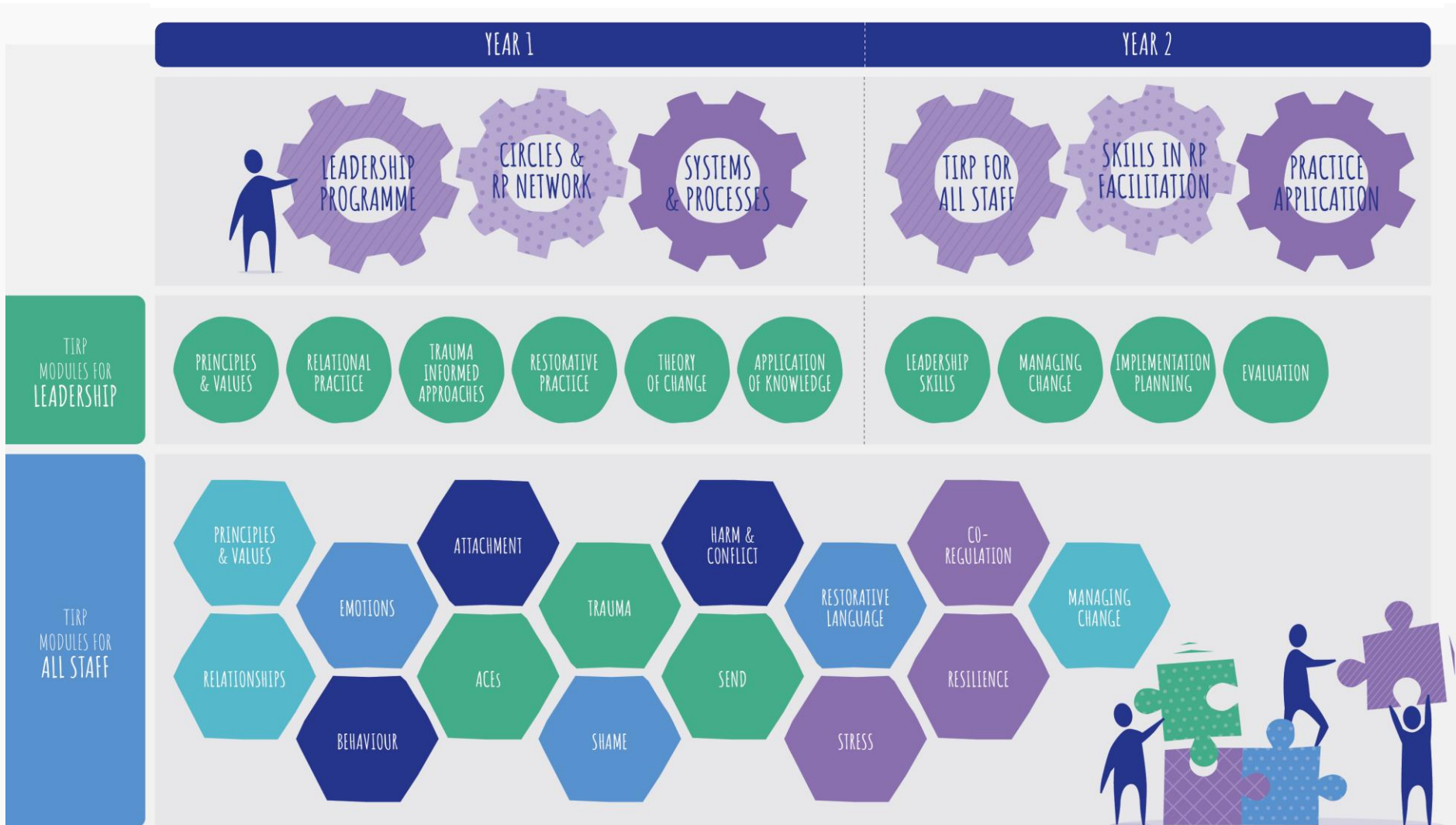
PROCTOR-LEGG 2021



ADAPTED FROM WILBER

RELATIONAL SCHOOLS PROGRAMME

IMPLEMENTATION MODEL



WE DO NOT LEARN FROM EXPERIENCE... WE LEARN FROM REFLECTING ON EXPERIENCE

JOHN DEWEY

TRAUMA INFORMED RELATIONAL PRACTICE (TIRP) MODULES

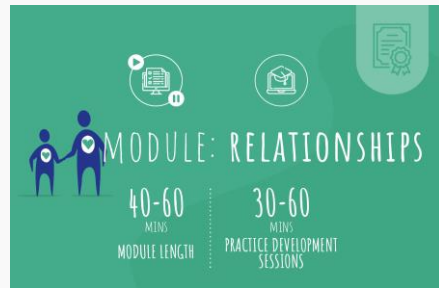


MODULE: PRINCIPLES & VALUES

40-60 MINS
MODULE LENGTH

30-60 MINS
PRACTICE DEVELOPMENT SESSIONS

Icons: person with puzzle piece, computer, envelope, certificate.



MODULE: RELATIONSHIPS

40-60 MINS
MODULE LENGTH

30-60 MINS
PRACTICE DEVELOPMENT SESSIONS

Icons: person with heart, computer, envelope, certificate.

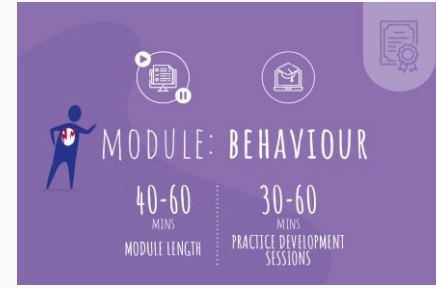


MODULE: EMOTIONS

40-60 MINS
MODULE LENGTH

30-60 MINS
PRACTICE DEVELOPMENT SESSIONS

Icons: person with heart, computer, envelope, certificate.



MODULE: BEHAVIOUR

40-60 MINS
MODULE LENGTH

30-60 MINS
PRACTICE DEVELOPMENT SESSIONS

Icons: person with heart, computer, envelope, certificate.



MODULE: ATTACHMENT

40-60 MINS
MODULE LENGTH

30-60 MINS
PRACTICE DEVELOPMENT SESSIONS

Icons: person with heart, computer, envelope, certificate.

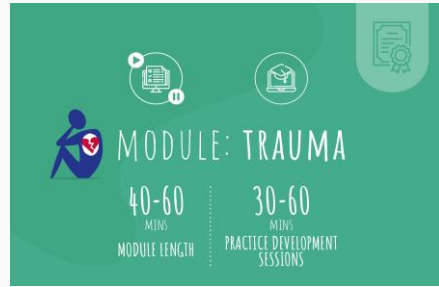


MODULE: ACEs ADVERSE CHILDHOOD EXPERIENCES

40-60 MINS
MODULE LENGTH

30-60 MINS
PRACTICE DEVELOPMENT SESSIONS

Icons: person with heart, computer, envelope, certificate.



MODULE: TRAUMA

40-60 MINS
MODULE LENGTH

30-60 MINS
PRACTICE DEVELOPMENT SESSIONS

Icons: person with heart, computer, envelope, certificate.



MODULE: SHAME

40-60 MINS
MODULE LENGTH

30-60 MINS
PRACTICE DEVELOPMENT SESSIONS

Icons: person with heart, computer, envelope, certificate.

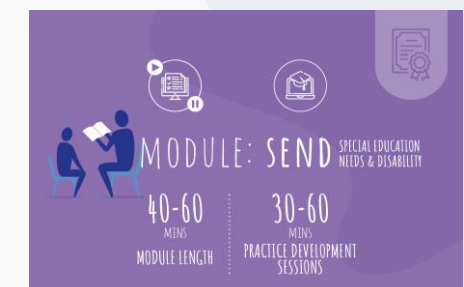


MODULE: HARM & CONFLICT

40-60 MINS
MODULE LENGTH

30-60 MINS
PRACTICE DEVELOPMENT SESSIONS

Icons: person with heart, computer, envelope, certificate.



MODULE: SEND SPECIAL EDUCATION NEEDS & DISABILITY

40-60 MINS
MODULE LENGTH

30-60 MINS
PRACTICE DEVELOPMENT SESSIONS

Icons: person with heart, computer, envelope, certificate.

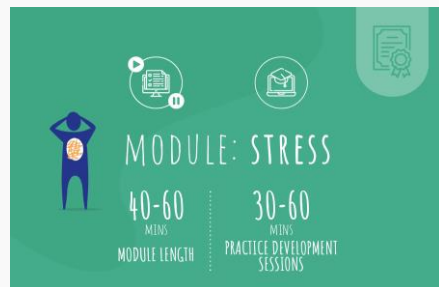


MODULE: RESTORATIVE LANGUAGE

40-60 MINS
MODULE LENGTH

30-60 MINS
PRACTICE DEVELOPMENT SESSIONS

Icons: person with heart, computer, envelope, certificate.



MODULE: STRESS

40-60 MINS
MODULE LENGTH

30-60 MINS
PRACTICE DEVELOPMENT SESSIONS

Icons: person with heart, computer, envelope, certificate.



MODULE: CO-REGULATION

40-60 MINS
MODULE LENGTH

30-60 MINS
PRACTICE DEVELOPMENT SESSIONS

Icons: person with heart, computer, envelope, certificate.

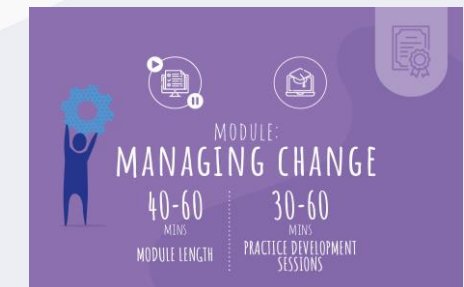


MODULE: RESILIENCE

40-60 MINS
MODULE LENGTH

30-60 MINS
PRACTICE DEVELOPMENT SESSIONS

Icons: person with heart, computer, envelope, certificate.



MODULE: MANAGING CHANGE

40-60 MINS
MODULE LENGTH

30-60 MINS
PRACTICE DEVELOPMENT SESSIONS

Icons: person with heart, computer, envelope, certificate.

UNDERPINNING THEORIES

Neuro-sequential model of Therapeutics



Affect Theory



Social Capital Theory



Behaviour & Humanist



Affect Theory



Maslow's Hierarchy of Needs

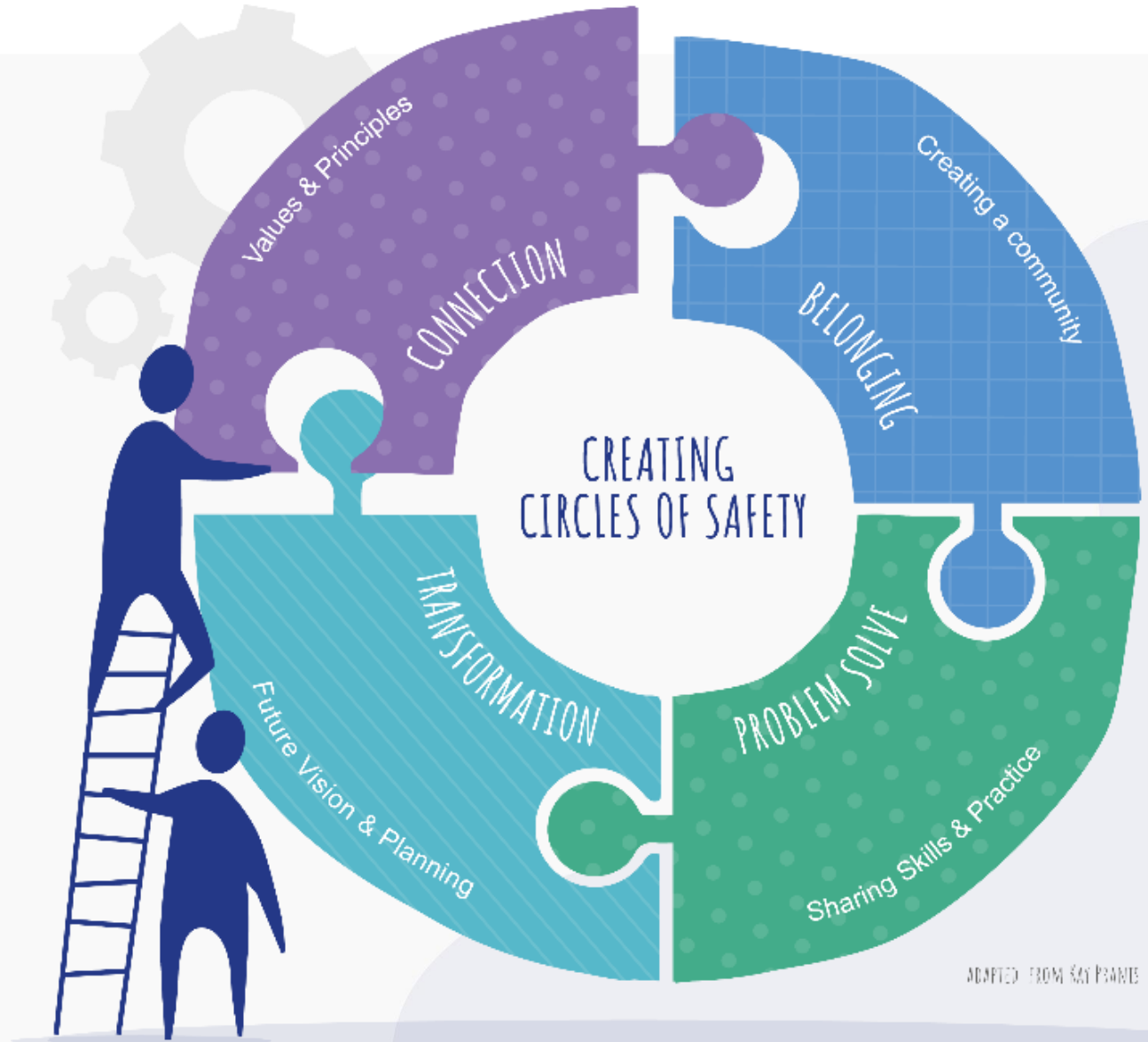
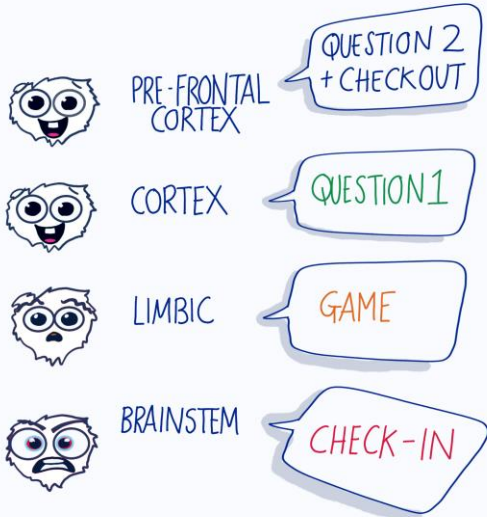


ACT





PRACTICE DISCUSSION CIRCLES



ADAPTED FROM KAY PSWANS

RELATIONAL SCHOOLS PROGRAMME

BUILDING inclusive
School Communities.



IMPROVED OUTCOMES FOR THE WHOLE SCHOOL COMMUNITY

CALMER, MORE
PEACEFUL, SCHOOL
ENVIRONMENTS

IMPROVES MENTAL
WELLBEING OF STAFF
AND PUPILS

REDUCES EXCLUSIONS
AND INCREASES
ATTENDANCE

CONFLICT
RESOLUTION
SKILLS FOR ALL

AVOIDANCE OF
EXCLUSION TO
PRISON PIPELINE

COLLABORATIVE,
MULTI-AGENCY
APPROACH TO
INCLUSION

BUILDS A
COMMUNITY OF
PRACTICE

CREATES
STRONGER
RELATIONSHIPS

GREATER STAFF RETENTION



BUILDS RESILIENCE ACROSS THE
SYSTEM TO MET NEED

FLEXIBLE

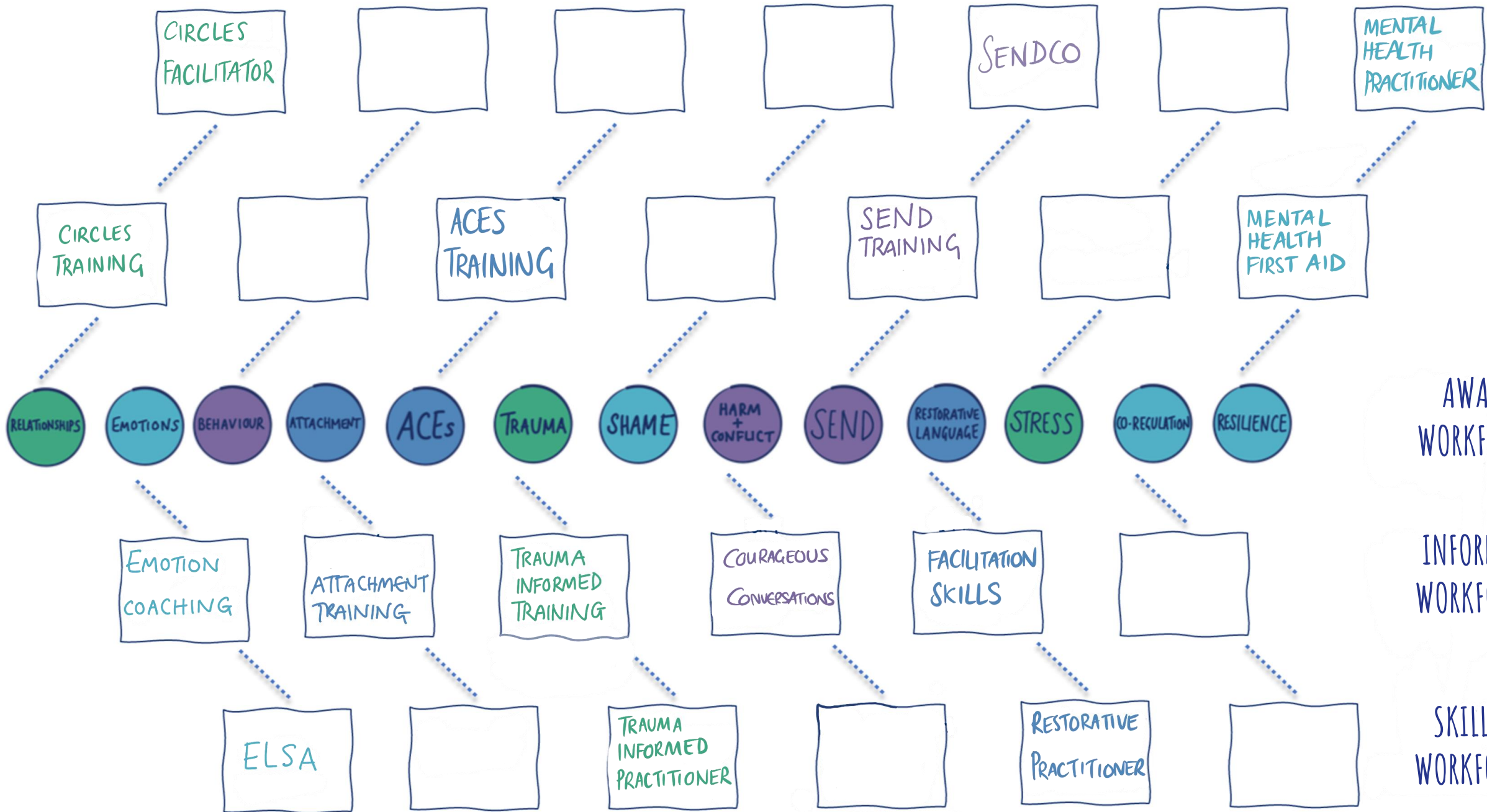
EFFECTIVE

ENGAGING

DYNAMIC

REFLECTIVE

INTERACTIVE



AWARE
WORKFORCE

INFORMED
WORKFORCE

SKILLED
WORKFORCE

Relational Schools Programme - Offer

At this point in time, the offer is:

- A 10-day Leadership Programme over 18 months for headteachers, an initial 3-day Circles Training for one member of staff and engagement by all staff in 15 TIRP modules over 18 months. Each module is followed up with a tailored and structured reflective circle session which is central to embedding the learning in practice.
- It will be free to the first 4 cohorts. If possible, we hope to continue with this offer.
- We will be evaluating the impact of the programme and asking schools to commit to providing information for this evaluation.

